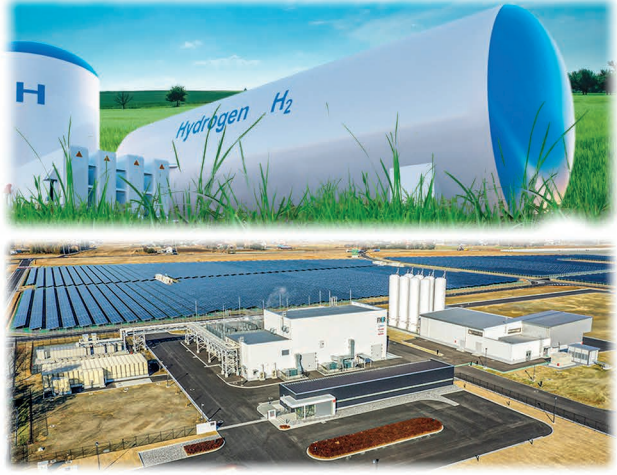


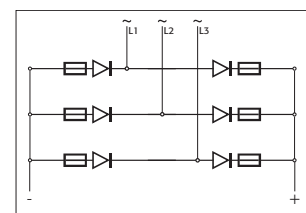
3 PHASE DIODE BRIDGE

Horizon for diode high current bridge



General description

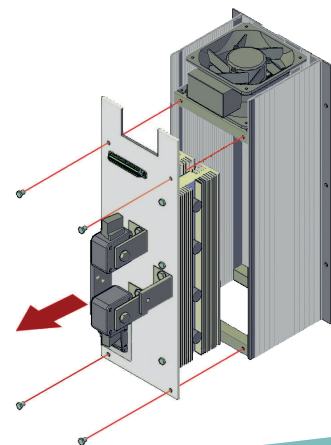
- All circuit board, fuses and thyristor can be inspected on opening front door
- Internal fixed fuses are standard with relay contact output for fuse failure
- Current transformer integrated (option)
- Special design for heat sink with very high dissipation value and cooling tunnel
- Easy for use with diagnostic and wiring diagram on front unit
- Modular Aluminium structure and copper parts treated against oxidation
- Comply with EMC
- Panel mounting



Maintainability in function

These are our targets:

- Each phase can be substituted by front unit by technician just removing 4 screw without the help of forklift.
The average weight of phase is 16kg
Time required to substitute one phase not more than 10 minutes.
- Plant downtime not more than 10 minutes, vital for important process
- When the operator replaces one phase, all the auxiliary connection are plug in
- This allow to be faster and avoid mistakes in wiring



OUTPUT FEATURES

Current I _{dc}	Voltage Range (1) up to	Ripetitive peak reverse voltage (2)		Max peak one cycle (10 msec)	Diode	Frequency range (Hz)	Power Loss I=I _{nom} (W)
		(600V)	(690V)				
2000A	20÷690V	2900	2900	17900	1602000	47÷70	1827 (1)
2300A	20÷690V	2900	2900	17900	1602000	47÷70	2220 (1)
3000A	20÷600V	3000	3000	30200	3920000	47÷70	2590 (1)
3500A	20÷690V	2600	2600	35300	6230000	47÷70	2765 (1)
4000A	20÷600V	2500	2500	45000	10125000	47÷70	2933 (1)

Note (1) For total bridge dissipation multiply by 3 Note (2) Voltage output features available at higher value

	1	2	3	4	5	6	7	8	9	10	11	12	13	14	15	16
ORDERING CODE	B	D	-	-	-	-	-	-	-	-	-	-	-	-	-	-

CURRENT	3	4	5	6	
description	code				note
2000A	2	0	0	0	
2300A	2	3	0	0	
3000A	3	0	0	0	
3500A	3	5	0	0	
4000A	4	0	0	0	
MAX VOLTAGE	7				
description	code				note
480V					4
600V					6
690V					7
VOLTAGE SUPPLY AUX.	8				
description	code				note
110V					1
220V					2
INPUT	9				
description	code				note
No Input					0
FIRING	10				
description	code				note
None					0
CONTROL MODE	11				
description	code				note
None					0

OPTION & FUSES	12	
description	code	note
Fixed fuses standard	F	
Fixed fuses + CT	Y	
FAN VOLTAGE	13	
description	code	note
Fan 110V	1	
Fan 220V Standard	2	
APPROVALS	14	
description	code	note
CE EMC	0	
MANUAL	15	
description	code	note
None	0	
Italian	1	
English	2	
German	3	
French	4	
LOAD TYPE	16	
description	code	note
Resistive Load	1	
Inductive Load	2	



Width: 632 mm
 Depth : 347 mm
 Height: 730 mm
 Weight: 86/110 Kg